

Obesity Weight Loss with Medication

Measure	Obesity Weight Loss with Medication	
Description	The percentage of adult patients 18 years of age and older BMI is ≥ 30 or BMI ≥ 27 and comorbidities* or Asian descent and initiate a weight loss medication during the denominator identification period who have a weight loss of greater than or equal to 10% within six months (-30/+ 60 days).	
Measurement Period Example measurement periods, actual dates may be adjusted based on pilot timeline.	Denominator Identification Period: May 1 202x to April 30, 202x (dates of service for 1 year of eligible patients) Assessment Period: September 1 202x to December 30, 2021x (need six months + 60 days] that ends 12/30/202x) Assessment Period: For each patient, the measure assessment period begins with an index event and is 5 to 8 months in length (6 months -30/+ 60 days).	
Eligible Population	Eligible Specialties	Family Medicine, Internal Medicine, and Endocrinology
	Ages	18 years or older at the start of the measurement period
	Index Event	Office visit during the measurement period (<i>Obesity Office Visits VS</i>) and with office recorded height and weight BMI ≥ 30 or BMI ≥ 27 and comorbidities* or Asian descent and start of prescription for weight loss medication.
Denominator	The eligible population	
Numerator	The number of patients in the denominator who achieve a weight loss of $\geq 10\%$ over six months (-30/+ 60 days). Most recent weight loss in a window of five to eight months.	
Exclusions	Pregnancy during the denominator identification period. Patients whose index medication end date is ≤ 42 days (6 weeks) from the start date.	
Measure Scoring	Rate/Proportion	
Interpretation of Score	Higher score indicates better quality	
Measure Type	Outcome	
Comorbidities*	Prediabetes, metabolic syndrome, type 2 diabetes, dyslipidemia, hypertension, obstructive sleep apnea and nonalcoholic fatty liver disease. (<i>Prediabetes VS, Metabolic Syndrome VS, Diabetes Type 2 VS, Dyslipidemia VS, Hypertension VS, Obstructive Sleep Apnea VS, Nonalcoholic Fatty Liver Disease VS</i>)	

Key Data Elements Needed to Calculate Measure:

- Birthdate for age calculation
- Height and weight for adult BMI calculation
- Weight loss medication (RxNorm and NDC codes]

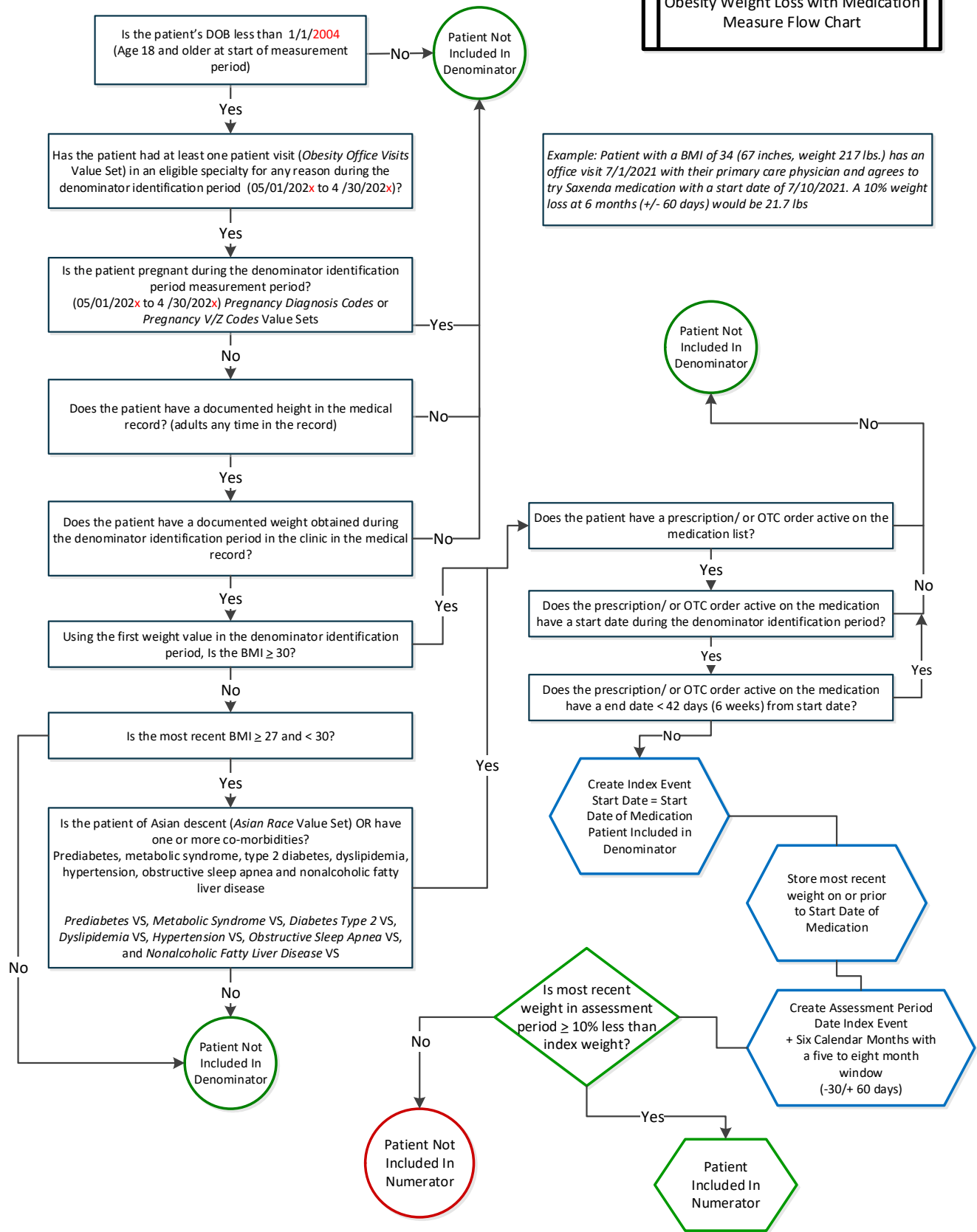
- CPT office visit codes
- ICD-10 diagnosis codes (encounter) for pregnancy exclusion
- ICD-10 diagnosis codes (problem list) for comorbidities of T2 diabetes, dyslipidemia, hypertension, obstructive sleep apnea and osteoarthritis

Medications:

- orlistat/ Xenical™
- Alli (over the counter)
- phentermine-topiramate/ Qsymia™
- naltrexone-bupropion/ Contrave™
- liraglutide/ Saxenda™ → only chose Saxenda™ labeled products; has cross-over with diabetes control at lower doses (Victoza™)
- semaglutide/ Wegovy™ → only chose Wegovy™ labeled products; has cross-over with diabetes control at lower doses (Ozempic™)
- phentermine

Measure Algorithm

Obesity Weight Loss with Medication Measure Flow Chart



Example: Patient with a BMI of 34 (67 inches, weight 217 lbs.) has an office visit 7/1/2021 with their primary care physician and agrees to try Saxenda medication with a start date of 7/10/2021. A 10% weight loss at 6 months (+/- 60 days) would be 21.7 lbs

Value Sets for Measure

Office Visits (Denominator)

- OB-1 *Obesity Office Visits*

Pregnancy (Exclusion)

- DM-02 *Diabetes with Pregnancy*
- PREG-01 *Pregnancy V/Z- Codes*
- PREG-02 *Pregnancy Diagnosis Codes*

Comorbidities (BMI \geq 27)

- OB-05 *Prediabetes*
- OB-12 *Metabolic Syndrome*
- DM-01 subset *Diabetes Type 2*
- OB-06 *Dyslipidemia*
- OB-07 *Hypertension*
- OB-08 *Obstructive Sleep Apnea*
- OB-09 *Nonalcoholic Fatty Liver Disease*
- OB-10 *Asian Race*

Medications (anchor weight loss, denominator)

- OB-03 *Obesity Weight Loss Meds RxNorm*
- OB-04 *Obesity Weight Loss Meds NDC*